

Clapham Common South Side, Clapham, SW4

1 bedroom flat to let

£484 Per Week

Furnished

Property Details

Keating Estates are delighted to present this stunning Victorian conversion top-floor flat, ideally positioned overlooking Clapham Common and just a short stroll from the Underground station.

This beautifully presented home combines period character with contemporary style. Original wood flooring and exposed brickwork add warmth and charm, while funky statement lighting and a sleek designer kitchen bring a modern, creative edge to the space. The result is a stylish, spacious home with a truly inviting atmosphere.

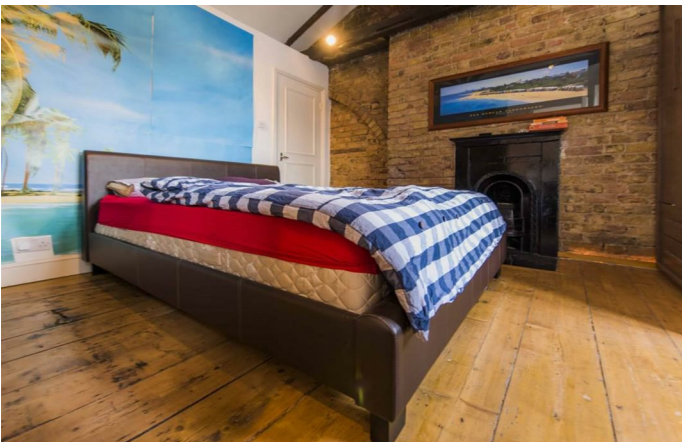
Perfectly located, the property enjoys easy access to the vibrant Clapham High Street, offering a fantastic selection of restaurants, cafés, bars and shops. The charming Abbeville Village is also within walking distance, known for its independent boutiques and eateries. On Saturdays, residents can enjoy the popular Venn Street food market ideal for weekend brunching and artisan produce shopping.

With its character features, modern finishes and unbeatable location overlooking the Common, this exceptional flat offers the perfect blend of lifestyle and convenience.

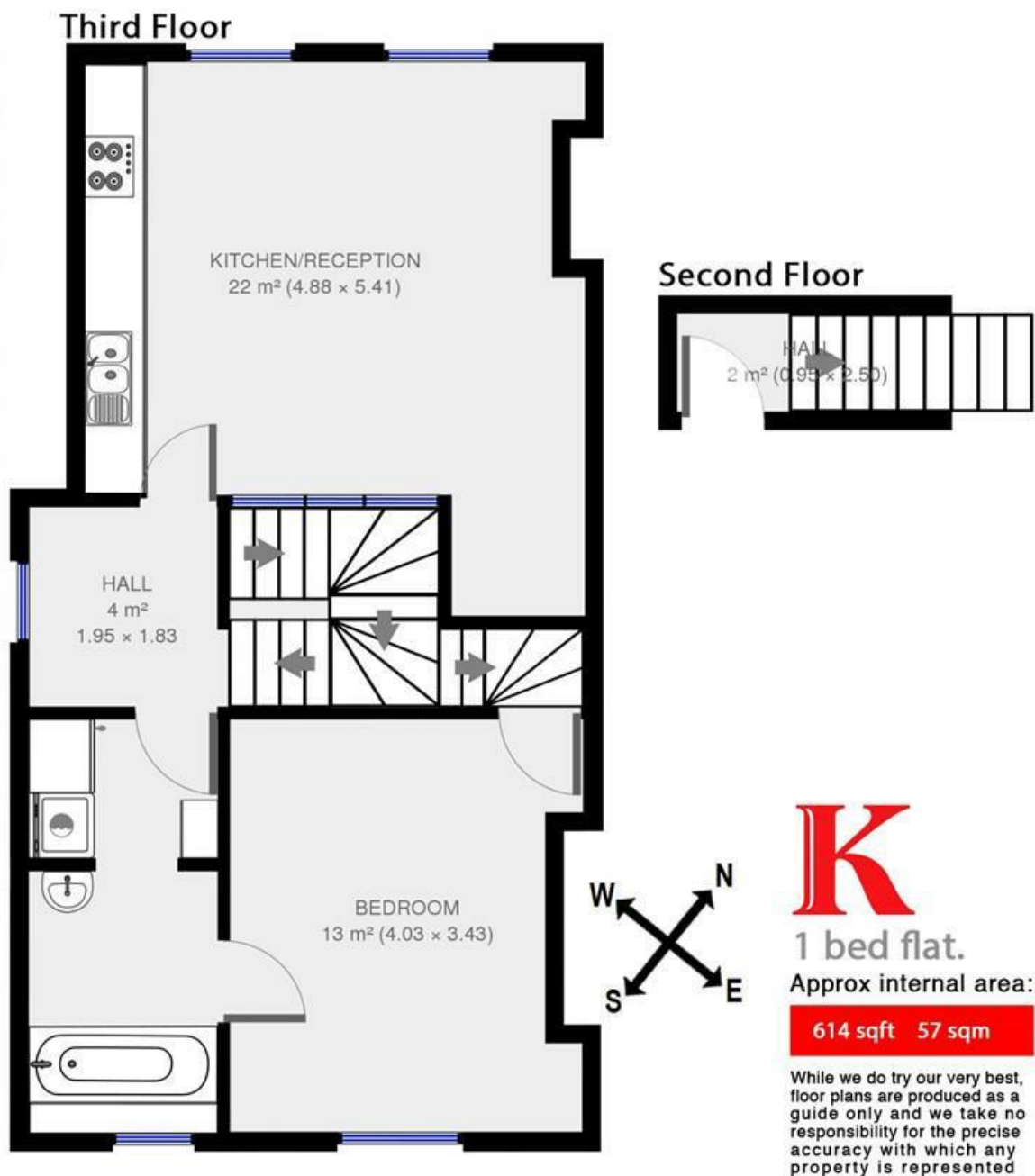
Features

- Hardwood floors and doors
- Characterful features
- Victorian conversion
- Bright and airy throughout
- Close to clapham common
- Excellent transport links

Council tax band C EPC rating E (50)



Clapham Common South Side



Clapham Common South Side, Clapham, SW4

